

DIN 2080 - Tapping Chuck - SK40 with compensation



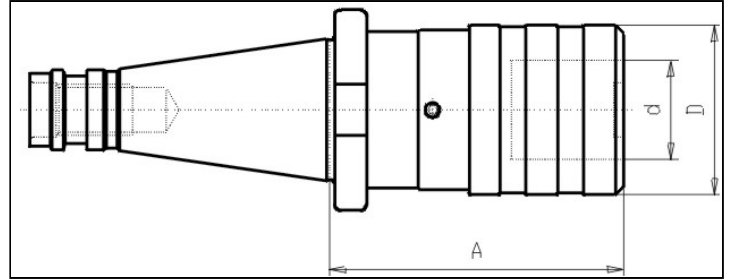
https://www.kfh-hermann.de/shop/product_info.php?products_id=25&XTCsid=n7eemf1jolajl8itk84fees403

Illustration



(https://www.kfh-hermann.de/shop/shop/images/product_images/original_images/bilder_B117.jpg?XTCsid=n7eemf1jolajl8itk84fees403)

Drawing



(https://www.kfh-hermann.de/shop/shop/images/product_images/original_images/skizzen_Z117mb.jp?XTCsid=n7eemf1jolajl8itk84fees403)

Technical information

Usage:	For fixing bushes for tapping chucks see Group 013. The torque of chamfer start can be adjusted mechanical with an hexagon socket screw. With compensation on press and pull
Customs tariff code:	84 661 02 0

Variants

Product No.	SK	Size	Thread	A	Form	d.	D	weight in kg	Stock 12.02, 08:14	Net-price
G117 40x 1x 52	40	1	M3-M12	53	A	19	38	1,05	2	Please start an inquiry
G117 40x 2x 77	40	2	M8-M20	77	A	31	55	1,55	2	Please start an inquiry
G117 40x 3x118	40	3	M14-M33	118	A	48	79	3	on inquiry	Please start an inquiry

Stock data from 2024-02-12 08:14:41

Kontakt

KARL HERMANN GmbH | Varnbülerstrasse 10 - 12 | D - 71229 Leonberg || Tel.: +49 (0)7152 / 93992-0 | Fax: +49 (0)7152 / 93992-4 | E-Mail: verkauf@kfh-hermann.de | Internet: <http://www.kfh-hermann.de>

2024-02-13 10:29:45, https://www.kfh-hermann.de/shop/product_info.php?products_id=25&XTCsid=n7eemf1jolajl8itk84fees403