

DIN 69871 - Collet Chuck ER - SK30

https://www.kfh-hermann.de/shop/product_info.php?products_id=66&XTCsid=n7eemf1jolajl8itk84fees403

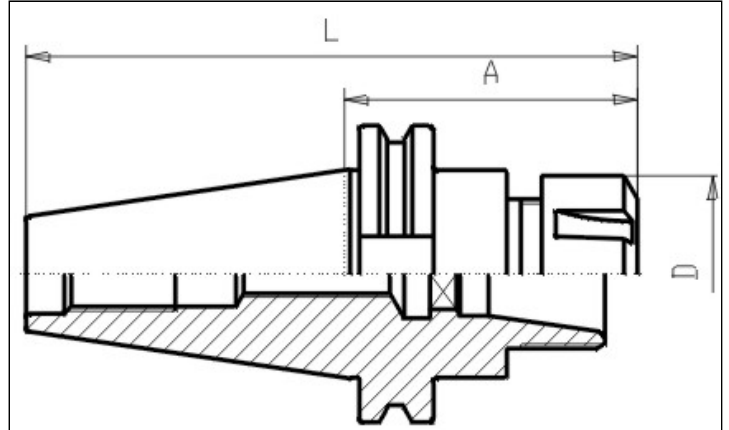


Illustration



(https://www.kfh-hermann.de/shop/shop/images/product_images/original_images/bilder_B310.jpg?XTCsid=n7eemf1jolajl8itk84fees403)

Drawing



(https://www.kfh-hermann.de/shop/shop/images/product_images/original_images/skizzen_Z310mb.jp?XTCsid=n7eemf1jolajl8itk84fees403)

Technical information

Usage:	For clamping of toolings with cylindrical shafts. Suitable for central internal coolant flow Form AD.
Scope of delivery:	with clamping-nut DIN 6499.
Accuracy:	taper to inner cone 5µm max.
Customs tariff code:	84 661 02 0
Coolant supply:	Central
Balanced:	G6,3 15.000 rpm

Variants

Product No.	SK	Typ ER	A	Form	L	D	Range ER	weight in kg	Stock 12.02, 08:14	Net-price
G310 30x16x 70	30	16	70	AD	118	32	1-10	0,6	> 50	Please start an inquiry
G310 30x16x100	30	16	100	AD	148	32	1-10	0,65	34	Please start an inquiry
G310 30x25x 70	30	25	70	AD	118	42	2-16	0,65	> 50	Please start an inquiry
G310 30x25x100	30	25	100	AD	148	42	2-16	0,8	19	Please start an inquiry
G310 30x32x 70	30	32	70	AD	118	50	3-20	0,7	33	Please start an inquiry
G310 30x32x100	30	32	100	AD	148	50	3-20	1	30	Please start an inquiry

Stock data from 2024-02-12 08:14:41

Kontakt

KARL HERMANN GmbH | Varnbülerstrasse 10 - 12 | D - 71229 Leonberg | | Tel.: +49 (0)7152 / 93992-0 | Fax: +49 (0)7152 / 93992-4 | E-Mail: verkauf@kfh-hermann.de | Internet: <http://www.kfh-hermann.de>

2024-02-13 10:35:01, https://www.kfh-hermann.de/shop/product_info.php?products_id=66&XTCsid=n7eemf1jolajl8itk84fees403