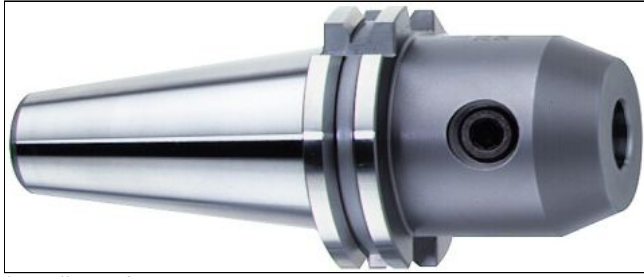


# DIN 69871 - End Mill Holder WELDON - SK50

[https://www.kfh-hermann.de/shop/product\\_info.php?products\\_id=81&XTCsid=n7eemf1jolajl8itk84fees403](https://www.kfh-hermann.de/shop/product_info.php?products_id=81&XTCsid=n7eemf1jolajl8itk84fees403)

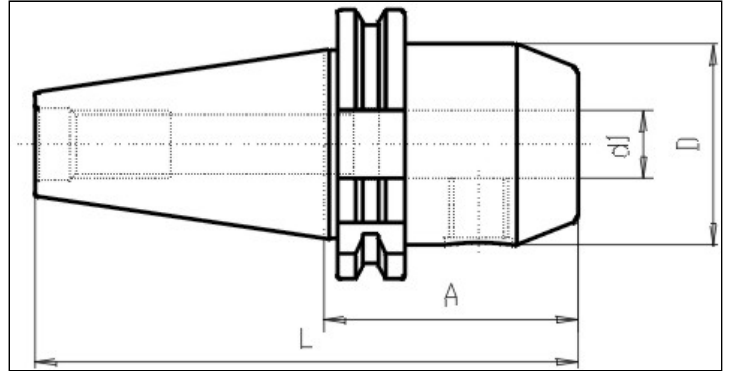


## Illustration



([https://www.kfh-hermann.de/shop/shop/images/product\\_images/original\\_images/bilder\\_B320.jpg?XTCsid=n7eemf1jolajl8itk84fees403](https://www.kfh-hermann.de/shop/shop/images/product_images/original_images/bilder_B320.jpg?XTCsid=n7eemf1jolajl8itk84fees403))

## Drawing



([https://www.kfh-hermann.de/shop/shop/images/product\\_images/original\\_images/skizzen\\_Z320mb.jp?XTCsid=n7eemf1jolajl8itk84fees403](https://www.kfh-hermann.de/shop/shop/images/product_images/original_images/skizzen_Z320mb.jp?XTCsid=n7eemf1jolajl8itk84fees403))

## Technical information

<b>Usage:</b>	For milling-tools with zylindrical shaft type Weldon DIN 1835 Form B. Suitable for internal coolant flow Form AD/B = either central or over collar. Coolant channels in the collar are closed by a plastic dowel which can be removed if necessary. Please don't re-use the removed plastic dowels.
<b>Scope of delivery:</b>	with 1 clamping screw, from Dia 25mm with 2 screws
<b>Accuracy:</b>	Runout 15µm max. a 3 x d. Due to the eccentric grinding of the bores, the run-out can only be checked by inserting a qualified tool blank. Do NOT measure bore ! (see technical information)
<b>Customs tariff code:</b>	84 661 02 0
<b>Coolant supply:</b>	Either Form AD = Central OR Form AD/B = combined coolant version ( Please take a look at the information for each single article).
<b>Balanced:</b>	G6,3 15.000 rpm / fine-balancing on grade G2,5 and/or higher rotations is possible with uplift price

## Variants

### There are no search results.

Would you like to search again?

[Search](#)

### There are no search results.

Would you like to search again?

[Search](#)

Product No.	SK	d1	A	Form	L	D	weight in kg	Stock 12.02, 08:14	Net-price
G320 50x 6x 63	50	6	63	AD	165	25	2,85	25	<b>Please start an inquiry</b>

G320D50x 6x 63	50	6	63	AD/B	165	25	2,9	27	<b>Please start an inquiry</b>
G320 50x 6x100	50	6	100	AD	202	25	3,05	23	<b>Please start an inquiry</b>
G320D50x 6x100	50	6	100	AD/B	202	25	3,1	9	<b>Please start an inquiry</b>
G320D50x 6x160	50	6	160	AD/B	262	25	3,25	12	<b>Please start an inquiry</b>
G320D50x 6x200	50	6	200	AD/B	302	25	--	25	<b>Please start an inquiry</b>
G320 50x 8x 63	50	8	63	AD	165	28	2,9	4	<b>Please start an inquiry</b>
G320D50x 8x 63	50	8	63	AD/B	165	28	2,9	13	<b>Please start an inquiry</b>
G320 50x 8x100	50	8	100	AD	202	28	3,15	20	<b>Please start an inquiry</b>
G320D50x 8x100	50	8	100	AD/B	202	28	3,2	30	<b>Please start an inquiry</b>
G320D50x 8x160	50	8	160	AD/B	262	28	3,4	32	<b>Please start an inquiry</b>
G320D50x 8x200	50	8	200	AD/B	302	28	3,6	9	<b>Please start an inquiry</b>
G320 50x10x 63	50	10	63	AD	165	35	2,9	16	<b>Please start an inquiry</b>
G320D50x10x 63	50	10	63	AD/B	165	35	2,9	26	<b>Please start an inquiry</b>
G320 50x10x100	50	10	100	AD	202	35	3,2	37	<b>Please start an inquiry</b>
G320D50x10x100	50	10	100	AD/B	202	35	3,2	11	<b>Please start an inquiry</b>
G320D50x10x160	50	10	160	AD/B	262	35	3,7	8	<b>Please start an inquiry</b>
G320D50x10x200	50	10	200	AD/B	302	35	4	on inquiry	<b>Please start an inquiry</b>
G320 50x12x 63	50	12	63	AD	165	42	3,05	15	<b>Please start an inquiry</b>
G320D50x12x 63	50	12	63	AD/B	165	42	3,1	23	<b>Please start an inquiry</b>
G320 50x12x100	50	12	100	AD	202	42	3,5	35	<b>Please start an inquiry</b>
G320D50x12x100	50	12	100	AD/B	202	42	3,5	12	<b>Please start an inquiry</b>
G320D50x12x160	50	12	160	AD/B	262	42	3,9	20	<b>Please start an inquiry</b>
G320D50x12x200	50	12	200	AD/B	302	42	4,6	18	<b>Please start an inquiry</b>
G320 50x12x250	50	12	250	AD	352	42	4,85	4	<b>Please start an inquiry</b>
G320 50x14x 63	50	14	63	AD	165	42	3	23	<b>Please start an inquiry</b>
G320D50x14x 63	50	14	63	AD/B	165	42	3	27	<b>Please start an inquiry</b>
G320D50x14x100	50	14	100	AD/B	202	42	3,5	13	<b>Please start an inquiry</b>
G320D50x14x160	50	14	160	AD/B	262	42	3,5	9	<b>Please start an inquiry</b>
G320D50x14x200	50	14	200	AD/B	302	42	3,5	7	<b>Please start an inquiry</b>
G320 50x16x 63	50	16	63	AD	165	48	3,1	> 50	<b>Please start an inquiry</b>
G320D50x16x 63	50	16	63	AD/B	165	48	3,1	30	<b>Please start an inquiry</b>
G320 50x16x100	50	16	100	AD	202	48	3,6	30	<b>Please start an inquiry</b>
G320D50x16x100	50	16	100	AD/B	202	48	3,6	> 50	<b>Please start an inquiry</b>
G320D50x16x160	50	16	160	AD/B	262	48	4,5	18	<b>Please start an inquiry</b>
G320D50x16x200	50	16	200	AD/B	302	48	5	17	<b>Please start an inquiry</b>
G320 50x16x250	50	16	250	AD	352	48	5,55	5	<b>Please start an inquiry</b>
G320 50x18x 63	50	18	63	AD	165	48	3,1	10	<b>Please start an inquiry</b>

G320D50x18x 63	50	18	63	AD/B	165	48	3,1	14	<b>Please start an inquiry</b>
G320D50x18x100	50	18	100	AD/B	202	48	3,6	28	<b>Please start an inquiry</b>
G320D50x18x160	50	18	160	AD/B	262	48	4,5	11	<b>Please start an inquiry</b>
G320D50x18x200	50	18	200	AD/B	302	48	--	15	<b>Please start an inquiry</b>
G320D50x20x 35	50	20	35	AD/B	137	70	--	28	<b>Please start an inquiry</b>
G320 50x20x 63	50	20	63	AD	165	52	3,15	> 50	<b>Please start an inquiry</b>
G320D50x20x 63	50	20	63	AD/B	165	52	3,2	> 50	<b>Please start an inquiry</b>
G320 50x20x100	50	20	100	AD	202	52	3,7	> 50	<b>Please start an inquiry</b>
G320D50x20x100	50	20	100	AD/B	202	52	3,7	7	<b>Please start an inquiry</b>
G320D50x20x160	50	20	160	AD/B	262	52	4,9	30	<b>Please start an inquiry</b>
G320D50x20x200	50	20	200	AD/B	302	52	5,6	4	<b>Please start an inquiry</b>
G320 50x20x250	50	20	250	AD	352	52	6	9	<b>Please start an inquiry</b>
G320 50x25x 35	50	25	35	AD	137	70	3,2	on inquiry	<b>Please start an inquiry</b>
G320D50x25x 35	50	25	35	AD/B	137	70	--	28	<b>Please start an inquiry</b>
G320 50x25x 80	50	25	80	AD	182	63	3,75	> 50	<b>Please start an inquiry</b>
G320D50x25x 80	50	25	80	AD/B	165	63	3,8	> 50	<b>Please start an inquiry</b>
G320D50x25x100	50	25	100	AD/B	202	63		13	<b>Please start an inquiry</b>
G320D50x25x160	50	25	160	AD/B	262	63	6,1	31	<b>Please start an inquiry</b>
G320D50x25x200	50	25	200	AD/B	302	63	7,2	on inquiry	<b>Please start an inquiry</b>
G320 50x25x250	50	25	250	AD	352	52	7,75	7	<b>Please start an inquiry</b>
G320D50x32x 35	50	32	35	AD/B	137	80	--	36	<b>Please start an inquiry</b>
G320 50x32x100	50	32	100	AD	202	70	4,6	> 50	<b>Please start an inquiry</b>
G320D50x32x100	50	32	100	AD/B	202	70	4,6	49	<b>Please start an inquiry</b>
G320D50x32x160	50	32	160	AD/B	262	70	6,9	9	<b>Please start an inquiry</b>
G320D50x32x200	50	32	200	AD/B	302	70	7,6	16	<b>Please start an inquiry</b>
G320 50x40x100	50	40	100	AD	202	90	4,9	> 50	<b>Please start an inquiry</b>
G320D50x40x100	50	40	100	AD/B	202	90	4,9	> 50	<b>Please start an inquiry</b>
G320D50x50x120	50	50	120	AD/B	212	100	--	44	<b>Please start an inquiry</b>

Stock data from 2024-02-12 08:14:41

## Kontakt

KARL HERMANN GmbH | Varnbülerstrasse 10 - 12 | D - 71229 Leonberg || Tel.: +49 (0)7152 / 93992-0 | Fax: +49 (0)7152 / 93992-4 | E-Mail: [verkauf@kfh-hermann.de](mailto:verkauf@kfh-hermann.de) | Internet: <http://www.kfh-hermann.de>

2024-02-13 10:41:37, [https://www.kfh-hermann.de/shop/product\\_info.php?products\\_id=81&XTCsid=n7eemf1jolajl8itk84fees403](https://www.kfh-hermann.de/shop/product_info.php?products_id=81&XTCsid=n7eemf1jolajl8itk84fees403)