

DIN 2080 - Blank Bar - SK40



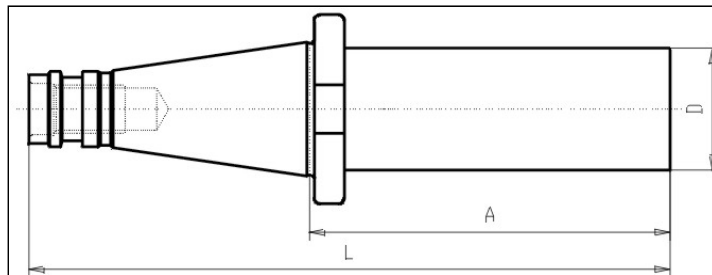
https://www.kfh-hermann.de/shop/product_info.php?products_id=57&XTCsid=n7eemf1jolajl8itk84fees403

Illustration



(https://www.kfh-hermann.de/shop/shop/images/product_images/original_images/bilder_B199.jpg?XTCsid=n7eemf1jolajl8itk84fees403)

Drawing



(https://www.kfh-hermann.de/shop/shop/images/product_images/original_images/skizzen_Z199mb.jp?XTCsid=n7eemf1jolajl8itk84fees403)

Technical information

Usage:	For production of special toolholders
Customs tariff code:	84 661 02 0

Variants

There are no search results.

Would you like to search again?

[Search](#)

Product No.	SK	A	Form	L	D	weight in kg	Stock 12.02, 08:14	Net-price
G199 40x405x160	40	160	A	253	41	2,35	on inquiry	Please start an inquiry
G199 40x63x250	40	250	A	343	64	6,5	on inquiry	Please start an inquiry

Stock data from 2024-02-12 08:14:41

Kontakt

KARL HERMANN GmbH | Varnbülerstrasse 10 - 12 | D - 71229 Leonberg || Tel.: +49 (0)7152 / 93992-0 | Fax: +49 (0)7152 / 93992-4 | E-Mail: verkauf@kfh-hermann.de | Internet: <http://www.kfh-hermann.de>

2024-02-13 10:28:05, https://www.kfh-hermann.de/shop/product_info.php?products_id=57&XTCsid=n7eemf1jolajl8itk84fees403