

DIN 69871 - Draw Thread Morse Taper Adap. - SK30

https://www.kfh-hermann.de/shop/product_info.php?products_id=122&XTCsid=n7eemf1jolajl8itk84fees403

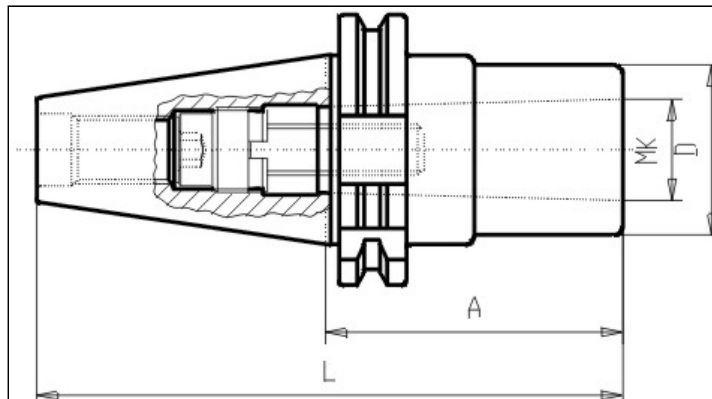


Illustration



(https://www.kfh-hermann.de/shop/shop/images/product_images/original_images/bilder_B361.jpg?XTCsid=n7eemf1jolajl8itk84fees403)

Drawing



(https://www.kfh-hermann.de/shop/shop/images/product_images/original_images/skizzen_Z361mb.jp?XTCsid=n7eemf1jolajl8itk84fees403)

Technical information

Usage:	For toolings with morse taper and thread
Scope of delivery:	with internal clamping screw
Accuracy:	Runout of taper to inner-MT 10µm max.
Customs tariff code:	84 661 02 0

Variants

Product No.	SK	Inside MT	A	Form	L	D	weight in kg	Stock 12.02, 08:14	Net-price
G361 30x1x 50	30	1	50	A	98	25	0,5	32	Please start an inquiry
G361 30x2x 63	30	2	63	A	111	32	0,6	on inquiry	Please start an inquiry
G361 30x3x 82	30	3	82	A	130	40	0,8	42	Please start an inquiry

Stock data from 2024-02-12 08:14:41

Kontakt

KARL HERMANN GmbH | Varnbülerstrasse 10 - 12 | D - 71229 Leonberg | | Tel.: +49 (0)7152 / 93992-0 | Fax: +49 (0)7152 / 93992-4 | E-Mail: verkauf@kfh-hermann.de | Internet: <http://www.kfh-hermann.de>

2024-02-13 10:52:51, https://www.kfh-hermann.de/shop/product_info.php?products_id=122&XTCsid=n7eemf1jolajl8itk84fees403