

PROMOTIONS

valid until 30.06.2016



SPECIAL OFFERS ON

Turning & Milling Inserts
High Feed Milling
Shoulder & Face Milling
Solid Carbide End Mills
Drilling
Threading

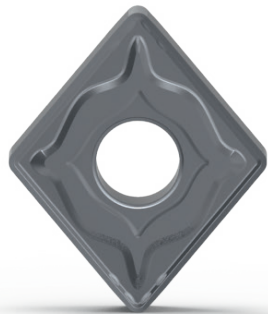
Additional discounts available
Receive 1 cutter for free
Special prices available
Special prices available
50% off drill bodies
Save up to 63% on sets



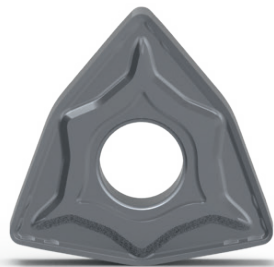
LAMINA
TECHNOLOGIES

TURNING | LT 1005, LT 1025

Get an additional **20% discount** on
CNMG 12 and **WNMG 08**
in our new Magia premium CVD grades



CNMG 12
LT 1005 | LT 1025



WNMG 08
LT 1005 | LT 1025

magia

Promotions not cumulative



MAGIA LT 1005 CVD Grade



MODERATED TO HIGH SPEED



STABLE CONDITIONS

- Increased hardness and wear resistance at high temperatures make this grade well suited for stable conditions and higher cutting speeds
- Highly resistant to plastic deformation thus maintaining high dimensional tolerances

MAGIA LT 1025 CVD Grade

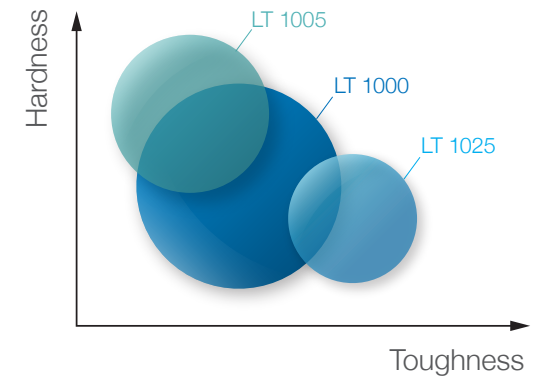


LOW TO MODERATED SPEED



UNSTABLE CONDITIONS

- Increased toughness makes this grade excellent for unstable conditions, such as interrupted cut
- The low chemical affinity between top ceramic layer and workpiece material ensures low friction and increased resistance to built-up edge development even at low cutting speeds in facing applications



See more

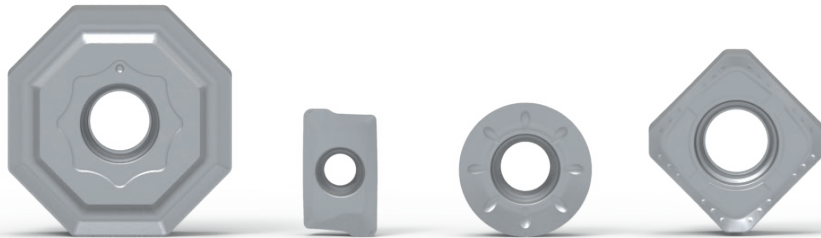


MILLING | LT 3000

Try our new Magia premium grade for milling

Buy 50 milling inserts*
get an additional **10% discount**

Buy 100 milling inserts*
get an additional **15% discount**



* Valid for all LT 3000 items of the same reference

magia

Multi-Mat™

Promotions not cumulative
Items on request not included in this promotion



MAGIA LT 3000

PVD Grade



- Denser micro structured PVD coating
- Smoother coating
- Lower wear rate
- Progressive & predictable wear
- More flexibility
- Extended applicable range

Lamina Technologies premium Multi-Mat™ milling grade provides higher performance, greater productivity, excellent thermal shock resistance & even longer tool life.

Magia LT 3000 can be applied at higher & lower cutting speeds

TEST REPORTS

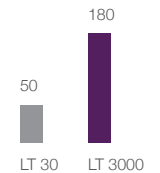
High Feed Milling | SDKX 0904 HF LT 3000



Vc 113 m/min
fz 1.04 mm/tooth
doc 0.5mm
woc 70%

High Alloyed Steel
1.2711 (mould)

TOOL LIFE (MIN)



TEST REPORTS

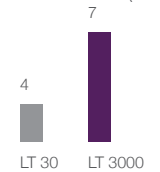
Face Milling | OFMT 05T305 TN LT 3000



Vc 250 m/min
fz 0.3 mm/tooth
doc 2mm
woc 70%

Stainless Steel
304

TOOL LIFE (PCS)

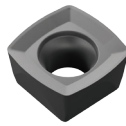


See more



HIGH FEED MILLING

Buy 30* SDKX 0904-HF or 1205-HF LT 3000 inserts and receive an **end mill** or **screw coupling FREE**



End Mills for SDKX 0904-HF	D	Z	Catalog Nr	# inserts
KIT 902 WL-W-D25/2 SD*30	25	2	K0003856	30
KIT 902 W-W-D25/2 SD*30	25	2	K0003857	30
KIT 902 WL-W-D32/3 SD*30	32	3	K0003858	30
KIT 902 W-W-D32/3 SD*30	32	3	K0003859	30

End Mills for SDKX 1205-HF	D	Z	Catalog Nr	# inserts
KIT 903 WL-W-D32/2 SD*30	32	2	K0003860	30
KIT 903 W-W-D32/2 SD*30	32	2	K0003861	30

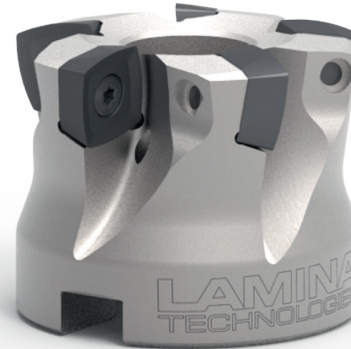
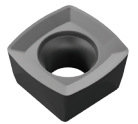
Screw Coupling for SDKX 0904-HF	D	Z	Catalog Nr	# inserts
KIT 902 S-W-D25/2 SD*30	25	2	K0003853	30
KIT 902 S-W-D32/3 SD*30	32	3	K0003854	30
KIT 902 S-W-D35/4 SD*30	35	4	K0003855	30

Screw Coupling for SDKX 1205-HF	D	Z	Catalog Nr	# inserts
KIT 903 S-W-D32/2 SD*30	32	2	K0003862	30
KIT 903 S-W-D35/2 SD*30	35	2	K0003863	30
KIT 903 S-W-D40/4 SD*30	40	4	K0003864	30

* At regular price
Promotions not cumulative



Buy 50* SDKX 0904-HF or 1205-HF LT 3000 inserts receive a **shell mill FREE**



Shell Mills for SDKX 0904-HF	D	Z	Catalog Nr	# inserts
KIT 902 M-W-D40/5 SD*50	40	5	K0003849	50
KIT 902 M-W-D42/5 SD*50	42	5	K0003850	50
KIT 902 M-W-D50/6 SD*50	50	6	K0003851	50
KIT 902 M-W-D52/6 SD*50	52	6	K0003852	50

Shell Mills for SDKX 1205-HF	D	Z	Catalog Nr	# inserts
KIT 903 M-W-D50/4 SD*50	50	4	K0003866	50
KIT 903 M-W-D50/5 SD*50	50	5	K0003867	50
KIT 903 M-W-D52/5 SD*50	52	5	K0003868	50
KIT 903 M-W-D63/6 SD*50	63	6	K0003869	50
KIT 903 M-W-D63/5 SD*50	63	5	K0003870	50
KIT 903 M-W-D66/6 SD*50	66	6	K0003871	50

* At regular price
Promotions not cumulative

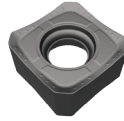


See it
in action

45° FACE MILLING

1st CHOICE
For 45° Face Milling

Buy 10 SNKX 1205-45° LT 3000 inserts + a cutter and get a special price on the package deal



Lamina Technologies SNKX 45°

- Multi-Mat™ application
- Thick and strong inserts improves process reliability
- Positive cutting edges creates soft cut and high quality surfaces
- Magia LT 3000 provides even higher performance



Shell Mill for SNKX 1205-45°	D	Z	Catalog Nr	# inserts	€
KIT 946 M-W-D050/4 SN*10	50	4	K0003473	10	145
KIT 946 M-W-D063/6 SN*10	63	6	K0003474	10	190
KIT 946 M-W-D080/7 SN*10	80	7	K0003475	10	215
KIT 946 M-W-D100/8 SN*10	100	8	K0003476	10	245
KIT 946 M-W-D125/10 SN*10	125	10	K0003477	10	295

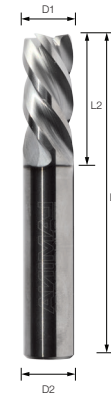
Promotions not cumulative



SOLID CARBIDE END MILLS

Save up to €176

Only €150 on our solid carbide end mill set



LT 4000 Multi-Mat™

SET E90 Z4 6-16mm					K0003976
Designation	D1	D2	L2	L1	Catalog Nr
E90 Z4 D06.0(06) L16.0(050) LT 4000	06.0	06	050	16.0	M5003575
E90 Z4 D08.0(08) L20.0(060) LT 4000	08.0	08	060	20.0	M5003576
E90 Z4 D10.0(10) L22.0(072) LT 4000	10.0	10	072	22.0	M5003577
E90 Z4 D12.0(12) L26.0(075) LT 4000	12.0	12	075	26.0	M5003578
E90 Z4 D16.0(16) L38.0(100) LT 4000	16.0	16	100	38.0	M5003579

Promotions not cumulative



SOLID CARBIDE END MILLS

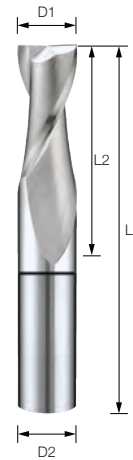
Receive a **special price** on our **best selling** solid carbide end mills in **Magia LT 4000**



See it in action

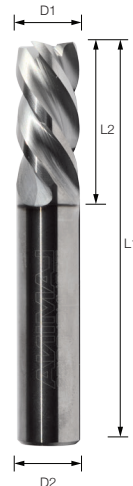
90° 2 Flutes

Designation	D1	D2	L1	L2	Catalog Nr	€
E90 Z2 D03.0(03) L09.0(038)	03.0	03	038	09.0	M5003540	9.46
E90 Z2 D04.0(04) L14.0(050)	04.0	04	050	14.0	M5003541	13.35
E90 Z2 D05.0(05) L16.0(050)	05.0	05	050	16.0	M5003542	13.35
E90 Z2 D06.0(06) L20.0(063)	06.0	06	063	20.0	M5003543	14.47
E90 Z2 D08.0(08) L20.0(063)	08.0	08	063	20.0	M5003544	18.92
E90 Z2 D10.0(10) L22.0(072)	10.0	10	072	22.0	M5003545	26.71
E90 Z2 D12.0(12) L26.0(075)	12.0	12	075	26.0	M5003546	36.73



90° 4 Flutes

Designation	D1	D2	L1	L2	Catalog Nr	€
E90 Z4 D03.0(06) L08.0(050)	03.0	06	050	08.0	M5003572	13.35
E90 Z4 D04.0(06) L11.0(050)	04.0	06	050	11.0	M5003573	15.02
E90 Z4 D05.0(06) L13.0(050)	05.0	06	050	13.0	M5003574	15.02
E90 Z4 D06.0(06) L16.0(050)	06.0	06	050	16.0	M5003575	16.43
E90 Z4 D08.0(08) L20.0(060)	08.0	08	060	20.0	M5003576	22.26
E90 Z4 D10.0(10) L22.0(072)	10.0	10	072	22.0	M5003577	31.17
E90 Z4 D12.0(12) L26.0(075)	12.0	12	075	26.0	M5003578	38.95
E90 Z4 D16.0(16) L38.0(100)	16.0	16	100	38.0	M5003579	77.91



90° 3 Flutes

Designation	D1	D2	L1	L2	Catalog Nr	€
E90 Z3 D03.0(06) L08.0(050)	03.0	06	050	08.0	M5003548	16.70
E90 Z3 D04.0(06) L11.0(050)	04.0	06	050	11.0	M5003549	16.70
E90 Z3 D05.0(06) L13.0(050)	05.0	06	050	13.0	M5003550	16.70
E90 Z3 D06.0(06) L16.0(050)	06.0	06	050	16.0	M5003551	16.70
E90 Z3 D08.0(08) L20.0(060)	08.0	08	060	20.0	M5003552	21.15
E90 Z3 D10.0(10) L25.0(072)	10.0	10	072	25.0	M5003553	30.05
E90 Z3 D12.0(12) L30.0(075)	12.0	12	075	30.0	M5003554	40.07

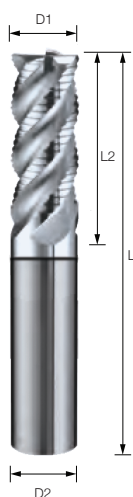


90° 3 Flutes, Rougher

Designation	D1	D2	L1	L2	Catalog Nr	€
ERO Z3 D04.0(06) L11.0(057)	04.0	06	057	11.0	M5003607	22.26

90° 4 Flutes, Rougher

Designation	D1	D2	L1	L2	Catalog Nr	€
ERO Z4 D05.0(06) L13.0(057)	05.0	06	057	13.0	M5003608	22.26
ERO Z4 D06.0(06) L13.0(057)	06.0	06	057	13.0	M5003609	24.49
ERO Z4 D08.0(08) L19.0(063)	08.0	08	063	19.0	M5003610	32.28
ERO Z4 D10.0(10) L22.0(072)	10.0	10	072	22.0	M5003611	48.98
ERO Z4 D12.0(12) L26.0(083)	12.0	12	083	26.0	M5003612	63.44



Promotions not cumulative



SOLID CARBIDE END MILLS

Receive a **special price** on our **best selling** solid carbide end mills in **Magia LT 4000**

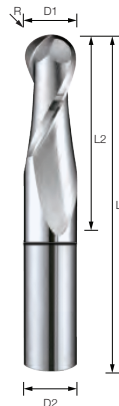
High Feed 4 Flutes

Designation	D1	D2	L1	L2	Catalog Nr	€
EHF Z4 D03.0(06) L02.0(070)R0.37	03.0	06	070	02.0	M5003600	24.49
EHF Z4 D04.0(06) L02.0(070)R0.47	04.0	06	070	02.0	M5003601	24.49
EHF Z4 D05.0(06) L02.5(070)R0.60	05.0	06	070	02.5	M5003602	24.49
EHF Z4 D06.0(06) L03.0(070)R0.73	06.0	06	070	03.0	M5003603	24.49
EHF Z4 D08.0(08) L04.0(080)R0.98	08.0	08	080	04.0	M5003604	35.62
EHF Z4 D10.0(10) L05.0(090)R1.23	10.0	10	090	05.0	M5003605	52.31
EHF Z4 D12.0(12) L06.0(100)R1.65	12.0	12	100	06.0	M5003606	73.46



Ball Nose 2 Flutes

Designation	D1	D2	L1	L2	Catalog Nr	€
EBN Z2 D03.0(03) L09.0(038)R1.50	03.0	03	038	09.0	M5003591	11.02
EBN Z2 D04.0(04) L14.0(050)R2.00	04.0	04	050	14.0	M5003592	12.94
EBN Z2 D05.0(05) L16.0(050)R2.50	05.0	05	050	16.0	M5003593	16.31
EBN Z2 D06.0(06) L20.0(063)R3.00	06.0	06	063	20.0	M5003594	21.90
EBN Z2 D08.0(08) L20.0(063)R4.00	08.0	08	063	20.0	M5003595	26.73
EBN Z2 D10.0(10) L22.0(072)R5.00	10.0	10	072	22.0	M5003596	40.34
EBN Z2 D12.0(12) L26.0(075)R6.00	12.0	12	075	26.0	M5003597	54.45

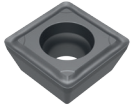


Promotions not cumulative



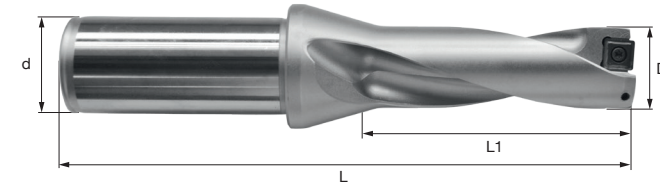
DRILL BODIES

Buy **30 SPMG LT30** inserts
and get **50% discount** on the
corresponding body of your choice



SPMG INSERTS:

- 050204
- 060204
- 07T308
- 090408
- 110408



SPMG 050204

2xD

3xD

Drill Bodies	D	d	L	L1	Catalog Nr
LT DR125 S05-2D	12.5	20	94	26	M2003704
LT DR130 S05-2D	13.0	20	94	26	M2003705
LT DR135 S05-2D	13.5	20	96	28	M2003706
LT DR140 S05-2D	14.0	20	96	28	M2003707
LT DR145 S05-2D	14.5	20	99	30	M2003708
LT DR150 S05-2D	15.0	20	99	30	M2003709

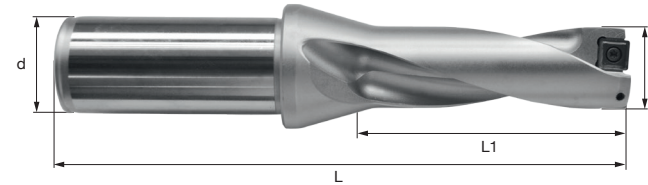
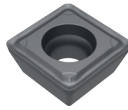
Drill Bodies	D	d	L	L1	Catalog Nr
LT DR125 S05-3D	12.5	20	107	39	M2003718
LT DR130 S05-3D	13.0	20	107	39	M2003719
LT DR135 S05-3D	13.5	20	110	42	M2003720
LT DR140 S05-3D	14.0	20	110	42	M2003721
LT DR145 S05-3D	14.5	20	114	45	M2003722
LT DR150 S05-3D	15.0	20	114	45	M2003723

Promotions not cumulative



DRILL BODIES

Buy 30 SPMG LT30 inserts
and get 50% discount on the
 corresponding body of your choice



SPMG 060204

2xD

3xD

Drill Bodies	D	d	L	L1	Catalog Nr
LT DR160 S06-2D	16.0	25	108	32	M2003247
LT DR170 S06-2D	17.0	25	110	34	M2003248
LT DR175 S06-2D	17.5	25	113	36	M2003695
LT DR180 S06-2D	18.0	25	113	36	M2003695
LT DR185 S06-2D	18.5	25	115	38	M2003696
LT DR190 S06-2D	19.0	25	115	38	M2003250
LT DR200 S06-2D	20.0	25	119	40	M2003251
LT DR210 S06-2D	21.0	25	121	42	M2003252

Drill Bodies	D	d	L	L1	Catalog Nr
LT DR160 S06-3D	16.0	25	124	48	M2003247
LT DR170 S06-3D	17.0	25	127	51	M2003248
LT DR175 S06-3D	17.5	25	131	54	M2003695
LT DR180 S06-3D	18.0	25	131	54	M2003695
LT DR185 S06-3D	18.5	25	134	57	M2003696
LT DR190 S06-3D	19.0	25	134	57	M2003250
LT DR200 S06-3D	20.0	25	139	60	M2003251
LT DR210 S06-3D	21.0	25	142	63	M2003252

SPMG 090408

2xD

3xD

Drill Bodies	D	d	L	L1	Catalog Nr
LT DR280 S09-2D	28.0	32	144	56	M2003260
LT DR290 S09-2D	29.0	32	146	58	M2003261
LT DR295 S09-2D	29.5	32	151	60	M2003699
LT DR300 S09-2D	30.0	32	151	60	M2003262
LT DR310 S09-2D	31.0	32	154	60	M2003263
LT DR320 S09-2D	32.0	32	156	64	M2003264
LT DR330 S09-2D	33.0	32	159	66	M2003265

Drill Bodies	D	d	L	L1	Catalog Nr
LT DR280 S09-3D	28.0	32	172	84	M2003278
LT DR290 S09-3D	29.0	32	175	87	M2003280
LT DR295 S09-3D	29.5	32	181	90	M2003703
LT DR300 S09-3D	30.0	32	181	90	M2003281
LT DR310 S09-3D	31.0	32	185	93	M2003282
LT DR320 S09-3D	32.0	32	188	96	M2003283
LT DR330 S09-3D	33.0	32	192	99	M2003284

SPMG 07T308

2xD

3xD

Drill Bodies	D	d	L	L1	Catalog Nr
LT DR220 S07-2D	22.0	25	123	44	M2003253
LT DR230 S07-2D	23.0	32	131	46	M2003255
LT DR240 S07-2D	24.5	32	134	48	M2003256
LT DR250 S07-2D	25.0	32	137	50	M2003257
LT DR260 S07-2D	26.0	32	139	52	M2003258
LT DR265 S07-2D	26.5	32	141	54	M2003698
LT DR270 S07-2D	27.0	32	141	54	M2003259

Drill Bodies	D	d	L	L1	Catalog Nr
LT DR220 S07-3D	22.0	25	145	66	M2003272
LT DR230 S07-3D	23.0	32	154	69	M2003273
LT DR240 S07-3D	24.5	32	158	72	M2003274
LT DR250 S07-3D	25.0	32	162	75	M2003275
LT DR260 S07-3D	26.0	32	165	78	M2003276
LT DR265 S07-3D	26.5	32	168	81	M2003702
LT DR270 S07-3D	27.0	32	168	81	M2003277

SPMG 110408

2xD

3xD

Drill Bodies	D	d	L	L1	Catalog Nr
LT DR340 S11-2D	34.0	40	171	68	M2003710
LT DR350 S11-2D	35.0	40	174	70	M2003711
LT DR360 S11-2D	36.0	40	177	72	M2003712
LT DR370 S11-2D	37.0	40	180	74	M2003713
LT DR380 S11-2D	38.0	40	183	76	M2003714
LT DR390 S11-2D	39.0	40	185	75	M2003715
LT DR400 S11-2D	40.0	40	188	80	M2003716
LT DR410 S11-2D	41.0	40	191	82	M2003717

Drill Bodies	D	d	L	L1	Catalog Nr
LT DR340 S11-3D	34.0	40	205	102	M2003724
LT DR350 S11-3D	35.0	40	209	105	M2003725
LT DR360 S11-3D	36.0	40	213	108	M2003726
LT DR370 S11-3D	37.0	40	217	111	M2003727
LT DR380 S11-3D	38.0	40	221	114	M2003728
LT DR390 S11-3D	39.0	40	224	117	M2003729
LT DR400 S11-3D	40.0	40	228	120	M2003730
LT DR410 S11-3D	41.0	40	232	123	M2003731

Promotions not cumulative



THREAD TURNING

Save
up to €91

Only €75 per set

Threading inserts sets, external & internal

SET 16ER ISO 1-2 EXTERNAL	K0003693
----------------------------------	-----------------

Included in the set

- 2x ISO 1.0 ER16 LT 10
- 2x ISO 1.25 ER16 LT 10
- 2x ISO 1.5 ER16 LT 10
- 2x ISO 1.75 ER16 LT 10
- 2x ISO 2.0 ER16 LT 10

SET 16IR ISO 1-2 INTERNAL	K0003694
----------------------------------	-----------------

Included in the set

- 2x ISO 1.0 IR16 LT 10
- 2x ISO 1.25 IR16 LT 10
- 2x ISO 1.5 IR16 LT 10
- 2x ISO 1.75 IR16 LT 10
- 2x ISO 2.0 IR16 LT 10



Promotions not cumulative



Save
up to €155

Only €115 per kit

Threading kits with holder of your choice ,
external & internal

EXTERNAL KIT	Catalog n°
KIT TT16 HER1616	K0003682
KIT TT16 HER2020	K0003683
KIT TT16 HER2525	K0003684

Included in the kit

- A60 ER16 LT 10
- G60 ER 16 LT 10
- W 11 ER16 LT 10
- W 14 ER16 LT 10
- ISO 1.0 ER16 LT 10
- ISO 1.25 ER16 LT 10
- ISO 1.5 ER16 LT 10
- ISO 2.0 ER16 LT 10
- ISO 2.5 ER16 LT 10
- ISO 3.0 ER16 LT 10
- Key

INTERNAL KIT	Catalog n°
KIT TT16 HIR0013M	K0003685
KIT TT16 HIR0016P	K0003686
KIT TT16 HIR0020P16	K0003687
KIT TT16 HIR0025R	K0003688

Included in the kit

- A60 IR16 LT 10
- G60 IR 16 LT 10
- W 11 IR16 LT 10
- W 14 IR16 LT 10
- ISO 1.0 IR16 LT 10
- ISO 1.25 IR16 LT 10
- ISO 1.5 IR16 LT 10
- ISO 2.0 IR16 LT 10
- ISO 2.5 IR16 LT 10
- ISO 3.0 IR16 LT 10
- Key



Promotions not cumulative



SOLID CARBIDE THREAD MILLS

Buy 3 thread mills and receive the **4th for free***

Designation	Thread size	Pitch mm	Catalog Nr
TMC03012L5 0.35 ISO	M1.6x0.35	0.35	TH400001
TMC06015L6 0.4 ISO	M2.0x0.40	0.40	TH400019
TMC06019L7 0.45 ISO	M2.5x0.45	0.45	TH400016
TMC06024L9 0.5 ISO	M3.0x0.50	0.50	TH400013
TMC06031L12 0.7 ISO	M4.0x0.70	0.70	TH400004
TMC06040L15 0.8 ISO	M5.0x0.80	0.80	TH400010
TMC06047L19 1.0 ISO	M6.0x1.00	1.00	TH400007
TMC06059L24 1.25 ISO	M8.0x1.25	1.25	TH400022

Lamina Technologies Thread Mills

- One tool for right hand and left hand thread
- One tool produces a wide variety of thread diameters of the same pitch
- Small machines can produce large threads due to a less spindle torque
- Eliminates the need of removing broken taps



* Lowest priced item
Promotions not cumulative



LAMINA TECHNOLOGIES



We are a Swiss manufacturer of carbide cutting tools specializing in milling and turning inserts. They are made of state-of-the-art sub-micron grades and coatings by our team of specialists in our factory in Switzerland.

With the Multi-Mat™ concept, we provide products that machine multiple materials with the same insert, thus allowing you to increase flexibility as well as reduce stock of unused and redundant cutting tools. You can reduce the cost of production and increase production efficiency.

- Simplify your process
- Decrease your tooling costs
- Minimize your machining down time
- Increase your production efficiency

Lamina continues its fast pace worldwide expansion and is currently represented in over 32 countries.

