

PROMOTIONS

valid until 31.12.2015



PROMOTIONS ON

High Feed Milling	Receive 1 cutter for free
Face Milling	Receive 1 cutter for free
Drilling	50% discount on drilling bodies
Threading	Save up to 63%
Solid End Mill	Get additional discount



LAMINA
TECHNOLOGIES

FACE MILLING



8 cutting edges

Buy **50*** or **70**** SNKX 12 inserts
receive 1 shell mill free !



Shell Mill for SNKX 1205-45° *

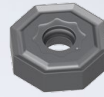
KIT 946 M-W-D050/4 SN*50	K0003844
KIT 946 M-W-D063/6 SN*50	K0003845
KIT 946 M-W-D080/7 SN*50	K0003846

Shell Mill for SNKX 1205-45° **

KIT 946 M-W-D100/8 SN*70	K0003916
KIT 946 M-W-D125/10 SN*70	K0003917

FACE MILLING

16 cutting edges



Buy **50***, **70**** or **100***** ONKX inserts
receive **1 shell mill free !**

Shell Mill for ONKX 0806-45 *

KIT 987 M-W-D063/5 ON*50	K0003875
KIT 987 M-W-D080/6 ON*50	K0003876

Shell Mill for ONKX 0806-45 **

KIT 987 M-W-D100/7 ON*70	K0003918
KIT 987 M-W-D125/8 ON*70	K0003919

Shell Mill for ONKX 0806-45 ***

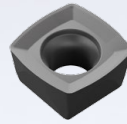
KIT 987 M-D-D160/10 ON*100	K0003920
----------------------------	----------



See it in action !



HIGH FEED MILLING



Buy **30** SDKX inserts
receive **1** end mill free !

End Mills for SDKX 0904-HF

KIT 902 WL-W-D25/2 SD*30	K0003856
KIT 902 W-W-D25/2 SD*30	K0003857
KIT 902 WL-W-D32/3 SD*30	K0003858
KIT 902 W-W-D32/3 SD*30	K0003859

End Mills for SDKX 1205-HF

KIT 903 WL-W-D32/2 SD*30	K0003860
KIT 903 W-W-D32/2 SD*30	K0003861



Screw Coupling for SDKX 0904-HF

KIT 902 S-W-D25/2 SD*30	K0003853
KIT 902 S-W-D32/3 SD*30	K0003854
KIT 902 S-W-D35/4 SD*30	K0003855

Screw Coupling for SDKX 1205-HF

KIT 903 S-W-D32/2 SD*30	K0003862
KIT 903 S-W-D35/2 SD*30	K0003863
KIT 903 S-W-D40/4 SD*30	K0003864

See it in action !



Buy **50** SDKX inserts
receive **1 shell mill free !**

Shell Mills for SDKX 0904-HF

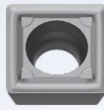
KIT 902 M-W-D40/5 SD*50	K0003849
KIT 902 M-W-D42/5 SD*50	K0003850
KIT 902 M-W-D50/6 SD*50	K0003851
KIT 902 M-W-D52/6 SD*50	K0003852

Shell Mills for SDKX 1205-HF

KIT 903 M-W-D50/4 SD*50	K0003866
KIT 903 M-W-D50/5 SD*50	K0003867
KIT 903 M-W-D52/5 SD*50	K0003868
KIT 903 M-W-D63/6 SD*50	K0003869
KIT 903 M-W-D63/5 SD*50	K0003870
KIT 903 M-W-D66/6 SD*50	K0003871



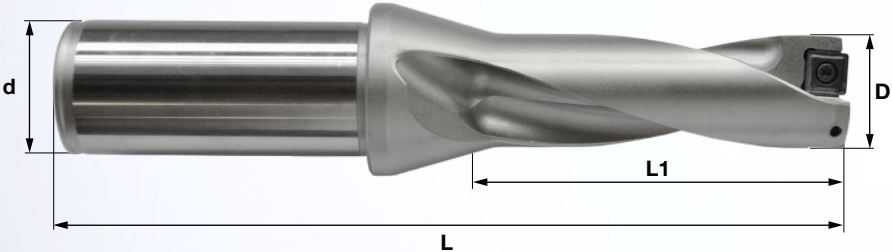
DRILLING



Buy **30** SPMG 05, 06, 07, 09, 11 inserts

and get 50% discount

on the correspondant body of your choice !



SPMG 050204

Drill Bodies	D	d
LT DR125 S05-_D	12.5	20
LT DR130 S05-_D	13.0	20
LT DR135 S05-_D	13.5	20
LT DR140 S05-_D	14.0	20
LT DR145 S05-_D	14.5	20
LT DR150 S05-_D	15.0	20

2xD

L	L1	Catalog Nr
94	26	M2003704
94	26	M2003705
96	28	M2003706
96	28	M2003707
99	30	M2003708
99	30	M2003709

3xD

L	L1	Catalog Nr
107	39	M2003718
107	39	M2003719
110	42	M2003720
110	42	M2003721
114	45	M2003722
114	45	M2003723

SPMG 060204

Drill Bodies	D	d
LT DR160 S06-_D	16.0	25
LT DR170 S06-_D	17.0	25
LT DR175 S06-_D	17.5	25
LT DR180 S06-_D	18.0	25
LT DR185 S06-_D	18.5	25
LT DR190 S06-_D	19.0	25
LT DR200 S06-_D	20.0	25
LT DR210 S06-_D	21.0	25

2xD

L	L1	Catalog Nr
108	32	M2003247
110	34	M2003248
113	36	M2003695
113	36	M2003249
115	38	M2003696
115	38	M2003250
119	40	M2003251
121	42	M2003252

3xD

L	L1	Catalog Nr
124	48	M2003266
127	51	M2003267
131	54	M2003700
131	54	M2003268
134	57	M2003701
134	57	M2003269
139	60	M2003270
142	63	M2003271

SPMG 07T308

Drill Bodies	D	d
LT DR220 S07-_D	22.0	25
LT DR230 S07-_D	23.0	32
LT DR240 S07-_D	24.5	32
LT DR250 S07-_D	25.0	32
LT DR260 S07-_D	26.5	32
LT DR265 S07-_D	26.5	32
LT DR270 S07-_D	27.0	32

2xD

L	L1	Catalog Nr
123	44	M2003253
131	46	M2003255
134	48	M2003256
137	50	M2003257
139	52	M2003258
141	54	M2003698
141	54	M2003259

3xD

L	L1	Catalog Nr
145	66	M2003272
154	69	M2003273
158	72	M2003274
162	75	M2003275
165	78	M2003276
168	81	M2003702
168	81	M2003277

SPMG 090408

Drill Bodies	D	d
LT DR280 S09-_D	28.0	32
LT DR290 S09-_D	29.0	32
LT DR295 S09-_D	29.5	32
LT DR300 S09-_D	30.0	32
LT DR310 S09-_D	31.5	32
LT DR320 S09-_D	32.0	32
LT DR330 S09-_D	33.0	32

2xD

L	L1	Catalog Nr
144	56	M2003260
146	58	M2003261
151	60	M2003699
151	60	M2003262
154	62	M2003263
156	64	M2003264
159	66	M2003265

3xD

L	L1	Catalog Nr
172	84	M2003278
175	87	M2003280
181	90	M2003703
181	90	M2003281
185	93	M2003282
188	96	M2003283
192	99	M2003284

SPMG 110408

Drill Bodies	D	d
LT DR340 S11-_D	34.0	40
LT DR350 S11-_D	35.0	40
LT DR360 S11-_D	36.0	40
LT DR370 S11-_D	37.0	40
LT DR380 S11-_D	38.0	40
LT DR390 S11-_D	39.0	40
LT DR400 S11-_D	40.0	40
LT DR410 S11-_D	41.0	40

2xD

L	L1	Catalog Nr
171	68	M2003710
174	70	M2003711
177	72	M2003712
180	74	M2003713
183	76	M2003714
185	78	M2003715
188	80	M2003716
191	82	M2003717

3xD

L	L1	Catalog Nr
205	102	M2003724
209	105	M2003725
213	108	M2003726
217	111	M2003727
221	114	M2003728
224	117	M2003729
228	120	M2003730
232	123	M2003731



THREADING

75 €
per set

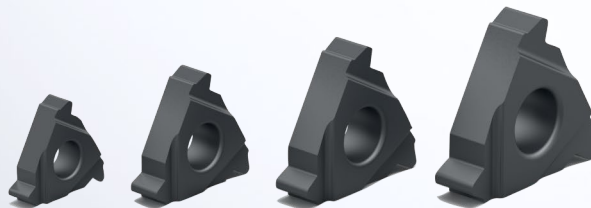


Set of 10 threading inserts

SET 16ER ISO 1-2 EXTERNAL	Qty	Catalog N°
ISO 1.0 ER16 LT 10	2	TH000037
ISO 1.25 ER16 LT 10	2	TH000043
ISO 1.5 ER16 LT 10	2	TH000049
ISO 1.75 ER16 LT 10	2	TH000055
ISO 2.0 ER16 LT 10	2	TH000058

Set of 10 threading inserts

SET 16IR ISO 1-2 INTERNAL	Qty	Catalog N°
ISO 1.0 IR16 LT 10	2	TH000040
ISO 1.25 IR16 LT 10	2	TH000046
ISO 1.5 IR16 LT 10	2	TH000052
ISO 1.75 IR16 LT 10	2	TH000056
ISO 2.0 IR16 LT 10	2	TH000061





115 €
per kit

Save up to 63%

KIT 16ER EXTERNAL	Qty	Catalog N°
A60 ER16 LT 10	1	TH000004
G60 ER 16 LT 10	1	TH000010
W 11 ER16 LT 10	1	TH000100
W 14 ER16 LT 10	1	TH000094
ISO 1.0 ER16 LT 10	1	TH000037
ISO 1.25 ER16 LT 10	1	TH000043
ISO 1.5 ER16 LT 10	1	TH000049
ISO 2.0 ER16 LT 10	1	TH000058
ISO 2.5 ER16 LT 10	1	TH000064
ISO 3.0 ER16 LT 10	1	TH000070
KEY	1	
Tool holder of your choice	1	

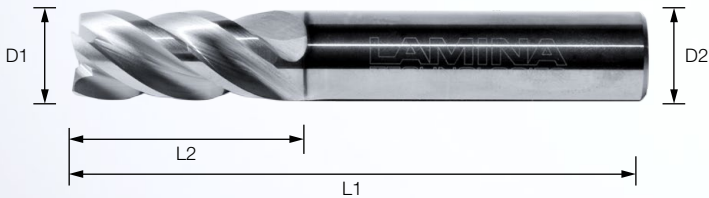
KIT 16IR INTERNAL	Qty	Catalog N°
A60 IR16 LT 10	1	TH000007
G60 IR 16 LT 10	1	TH000013
W 11 IR16 LT 10	1	TH000103
W 14 IR16 LT 10	1	TH000097
ISO 1.0 IR16 LT 10	1	TH000040
ISO 1.25 IR16 LT 10	1	TH000046
ISO 1.5 IR16 LT 10	1	TH000052
ISO 2.0 IR16 LT 10	1	TH000061
ISO 2.5 IR16 LT 10	1	TH000067
ISO 3.0 IR16 LT 10	1	TH000073
KEY	1	
Tool holder of your choice	1	

SOLID ENDMILL SET

Save up to 54%



150 €
per set



Designation	D1	D2	L2	L1	Catalog. Nr
SET E90 Z4 6-16mm					K0003976
E90 Z4 D06.0(06) L16.0(050) LT 4000	06.0	06	050	16.0	M5003575
E90 Z4 D08.0(08) L20.0(060) LT 4000	08.0	08	060	20.0	M5003576
E90 Z4 D10.0(10) L22.0(072) LT 4000	10.0	10	072	22.0	M5003577
E90 Z4 D12.0(12) L26.0(075) LT 4000	12.0	12	075	26.0	M5003578
E90 Z4 D16.0(16) L38.0(100) LT 4000	16.0	16	100	38.0	M5003579

SOLID ENDMILL

See it in action !



Buy 10 solid carbide end mills

Get 10% additional discount

Buy 20 solid carbide end mills

Get 20% additional discount

E90	2 Flutes - 3 Flutes - 4 Flutes
Ball Nose	2 Flutes
Roughing	3 Flutes - 4 Flutes
HF	4 Flutes





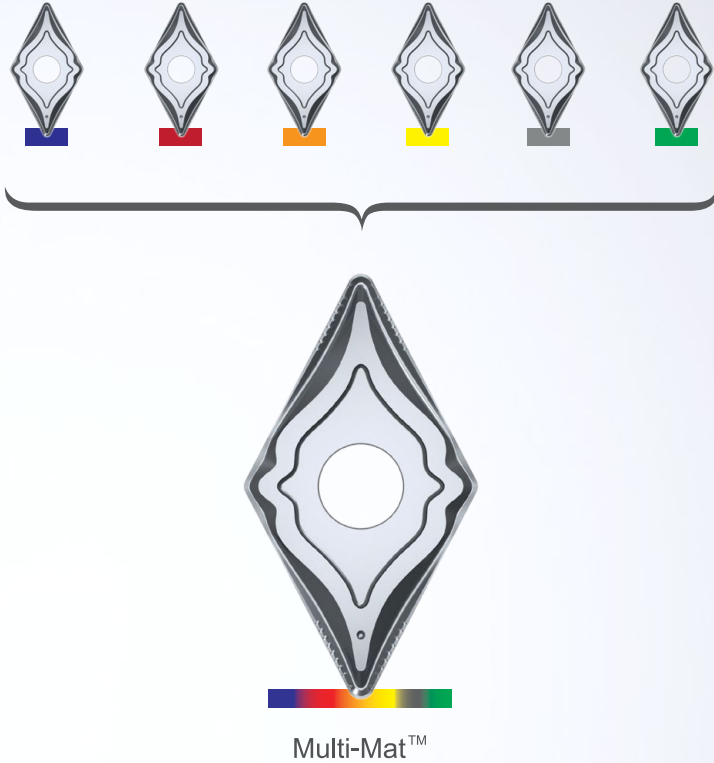
Lamina Technologies

Lamina Technologies, a Swiss manufacturer of carbide cutting tools, specializes in milling and turning inserts made of state-of-the-art sub-micron grades and PVD coatings.

Our goal is to provide products that increase flexibility and reduce stock of unused and redundant cutting tools, helping our customers reduce the cost of production and increase production efficiency.

Lamina produces our carbide products in our factory in Switzerland to insure the highest quality and consistency of production. Our factory is equipped with top-of-the-line, high accuracy, automated production machinery and is run by a team of experienced specialists.

Lamina continues its fast pace worldwide expansion and is currently represented in over 32 countries.



Lamina Technologies Multi-Mat™ Product Range

Lamina Technologies' innovative Multi-Mat™ concept was conceived and developed through an understanding of the complexities of the machining industry.

Through innovative sub-micron grades and specially developed, hyper-pulse PVD coatings, Lamina has developed a line of products that have excellent performance in variety of materials. Performance of our Multi-Mat™ inserts is as good as or better than inserts that are material specific.

By using the same insert to machine a variety of materials, our Multi-Mat™ inserts provide

- Increased production efficiency
- Reduced production costs
- Improved production flexibility
- Reduced cutting tool inventory

With Lamina's Multi-Mat™ inserts, our customers use the right tool, at the right time, all the time.

