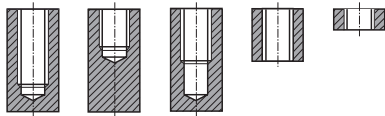


**STRAIGHT
FLUTE TAPS****TE821** SERIES**M** ISO metric coarse threads DIN 13
Metrisches ISO-Gewinde DIN 13

► Suitable for tapping cast iron or similar work materials.

► Geeignet zum Gewindeschneiden von Guss oder ähnlichen Werkstoffen

Hole type



DIN 371



DIN 376

Material groups
GG

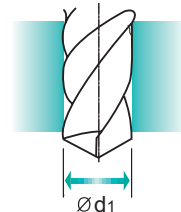
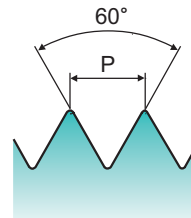
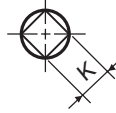
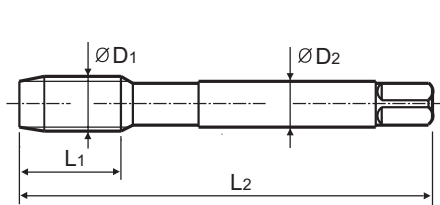
HSS-E

DIN
371/376

6HX



NI

Machine taps
Maschinengewindebohrer

Unit : mm

SIZE	Pitch	EDP No.	Thread Length	Overall Length	Shank Diameter	Square Size	Tapping drill diameter
ØD1	P		L1	L2	ØD2	K	Ød1
M2	× 0.4	TE821136	8	45	2.8	2.1	1.6
M2.2	× 0.45	TE821156	8	45	2.8	2.1	1.75
* M2.3	× 0.4	TE821196	8	45	2.8	2.1	1.9
M2.5	× 0.45	TE821176	9	50	2.8	2.1	2.05
* M2.6	× 0.45	TE821496	9	50	2.8	2.1	2.1
M3	× 0.5	TE821206	11	56	3.5	2.7	2.5
M3.5	× 0.6	TE821226	12	56	4	3	2.9
M4	× 0.7	TE821246	13	63	4.5	3.4	3.3
M4.5	× 0.75	TE821266	14	70	6	4.9	3.7
M5	× 0.8	TE821286	15	70	6	4.9	4.2
M6	× 1	TE821316	17	80	6	4.9	5
M7	× 1	TE821346	17	80	7	5.5	6
M8	× 1.25	TE821366	20	90	8	6.2	6.8
M9	× 1.25	TE821396	20	90	9	7	7.8
M10	× 1.5	TE821426	22	100	10	8	8.5
M11	× 1.5	TE821466	22	100	8	6.2	9.5
M12	× 1.75	TE821506	24	110	9	7	10.2
M14	× 2	TE821546	26	110	11	9	12
M16	× 2	TE821606	27	110	12	9	14
M18	× 2.5	TE821656	30	125	14	11	15.5
M20	× 2.5	TE821706	32	140	16	12	17.5
M22	× 2.5	TE821746	32	140	18	14.5	19.5
M24	× 3	TE821786	34	160	18	14.5	21
M27	× 3	TE821866	36	160	20	16	24
M30	× 3.5	TE821946	40	180	22	18	26.5

► DIN 371(M2~M10) and DIN 376(M11~M30)

► * DIN profile not ISO

Unit : N/mm²

◎ : Excellent ○ : Good

Steel < 400	Steel < 700	Steel < 850	St. Alloy < 850	St. Alloy ≤ 1200	St. Alloy > 1200	INOX Free < 850	INOX Aust. < 850	INOX < 1000	GG Cast < 500	GG Cast < 1000	GGG Cast < 700	GGG Cast < 1000	Ti < 700	Ti Alloy < 900
									◎	◎				
Ti Alloy ≤ 1300	Ni < 500	Ni Alloy < 900	Ni Alloy ≤ 1400	Cu < 350	Cu Alloy Short	Cu Alloy Long	Cu-Al-Fe < 1500	Al / Mg < 350	Al Wrought	Al Si ≤ 10%	Al Si > 10%	Plastic Thermosoft	Plastic Thermoset	Plastic FRP
														◎