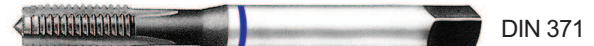
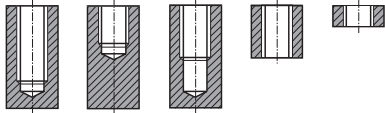


**STRAIGHT  
FLUTE TAPS****TC433** SERIES**M** ISO metric coarse threads DIN 13  
**Metrisches ISO-Gewinde DIN 13**

► Suitable for brass and short chip work materials.

► Geeignet zum Gewindeschneiden von Messing und anderen kurzspanenden Werkstoffen

**Hole type**

DIN 371



DIN 376

Material groups

**Ms**

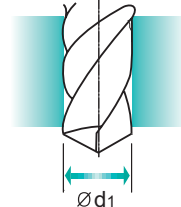
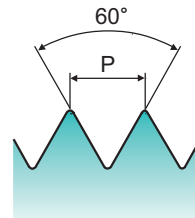
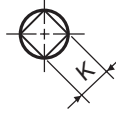
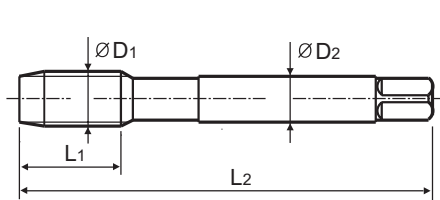
HSS-E

DIN  
371/376

6H



Bright

Machine taps  
Maschinengewindebohrer

Unit : mm

SIZE	Pitch	EDP No.	Thread Length	Overall Length	Shank Diameter	Square Size	Tapping drill diameter
ØD1	P		L1	L2	ØD2	K	Ød1
M2	× 0.4	<b>TC433136</b>	8	45	2.8	2.1	1.6
M2.2	× 0.45	<b>TC433156</b>	8	45	2.8	2.1	1.75
* M2.3	× 0.4	<b>TC433196</b>	8	45	2.8	2.1	1.9
M2.5	× 0.45	<b>TC433176</b>	9	50	2.8	2.1	2.05
* M2.6	× 0.45	<b>TC433496</b>	9	50	2.8	2.1	2.1
M3	× 0.5	<b>TC433206</b>	11	56	3.5	2.7	2.5
M3.5	× 0.6	<b>TC433226</b>	12	56	4	3	2.9
M4	× 0.7	<b>TC433246</b>	13	63	4.5	3.4	3.3
M4.5	× 0.75	<b>TC433266</b>	14	70	6	4.9	3.7
M5	× 0.8	<b>TC433286</b>	15	70	6	4.9	4.2
M6	× 1	<b>TC433316</b>	17	80	6	4.9	5
M7	× 1	<b>TC433346</b>	17	80	7	5.5	6
M8	× 1.25	<b>TC433366</b>	20	90	8	6.2	6.8
M9	× 1.25	<b>TC433396</b>	20	90	9	7	7.8
M10	× 1.5	<b>TC433426</b>	22	100	10	8	8.5
M11	× 1.5	<b>TC433466</b>	22	100	8	6.2	9.5
M12	× 1.75	<b>TC433506</b>	24	110	9	7	10.2
M14	× 2	<b>TC433546</b>	26	110	11	9	12
M16	× 2	<b>TC433606</b>	27	110	12	9	14
M18	× 2.5	<b>TC433656</b>	30	125	14	11	15.5
M20	× 2.5	<b>TC433706</b>	32	140	16	12	17.5
M22	× 2.5	<b>TC433746</b>	32	140	18	14.5	19.5
M24	× 3	<b>TC433786</b>	34	160	18	14.5	21
M27	× 3	<b>TC433866</b>	36	160	20	16	24
M30	× 3.5	<b>TC433946</b>	40	180	22	18	26.5

► DIN 371(M2~M10) and DIN 376(M11~M30)

► \* DIN profile not ISO

Unit : N/mm<sup>2</sup>

◎ : Excellent ○ : Good

Steel < 400	Steel < 700	Steel < 850	St. Alloy < 850	St. Alloy ≤ 1200	St. Alloy > 1200	INOX Free < 850	INOX Aust. < 850	INOX < 1000	GG Cast < 500	GG Cast < 1000	GGG Cast < 700	GGG Cast < 1000	Ti < 700	Ti Alloy < 900
Ti Alloy ≤ 1300	Ni < 500	Ni Alloy < 900	Ni Alloy ≤ 1400	Cu < 350	Cu Alloy Short	Cu Alloy Long	Cu-Al-Fe < 1500	Al / Mg < 350	Al Wrought	Al Si ≤ 10%	Al Si > 10%	Plastic Thermosoft	Plastic Thermoset	Plastic FRP