

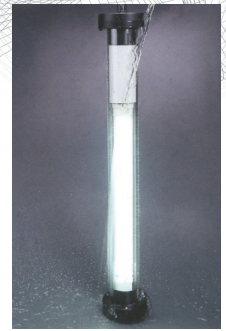
**WATER RESIST**



D SERIES



DB SERIES



● Outstanding Water-resist Performance

## Separate ballast series

ORDER NO.	LAMP LENGTH	BULB LENGTH	WATT	DIA	WEIGHT (kg)	CODE NO.
VHL-W10D	518m/m	345m/m	10	70mm	3.2	1025-030
VHL-W15D	632m/m	451m/m	15	70mm	3.5	1025-031
VHL-W18D/PL	425m/m	195m/m	18	70mm	2	1025-032
VHL-W20D	765m/m	580m/m	20	70mm	3.6	1025-033
VHL-W36D/PL	621m/m	385m/m	36	70mm	2.9	1025-034
VHL-W40D	1835m/m	1200m/m	40	70mm	5.1	1025-035

**FOUR MODELS TO CHOOSE FORM 10, 15, 20, AND 40 WATT. OUTSTANDING FEATURES**

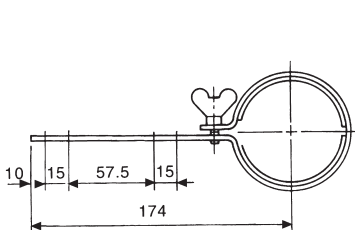
## Built-in ballast series

ORDER NO.	LAMP LENGTH	BULB LENGTH	WATT	DIA	WEIGHT (kg)	CODE NO.
VHL-W10DB	611m/m	330m/m	10	70mm	3.2	1025-040
VHL-W15DB	717m/m	436m/m	15	70mm	3.5	1025-041
VHL-W18DB/PL	525m/m	195m/m	18	70mm	2	1025-042
VHL-W20DB	861m/m	580m/m	20	70mm	3.6	1025-043
VHL-W36DB/PL	715m/m	385m/m	36	70mm	2.9	1025-044
VHL-W40DB	1529m/m	1200m/m	40	70mm	5.1	1025-045

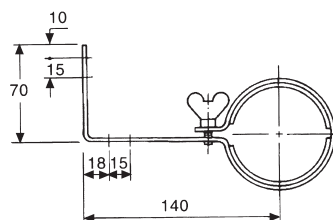
- Suited for machine lighting, indoor and outdoor lighting.
- Cool lighting performance.
- Anti-crack lamp.
- Swivelling mounting bracket (optional).
- Accommodates power source 110V or 220V, single voltage only.
- Specify HZ and voltage when ordering.
- The outer tube is manufactured from acrylic. When requested, the glass outer tube is available.
- Furnished with 1.8 meter (70") cord.

## OPTIONAL

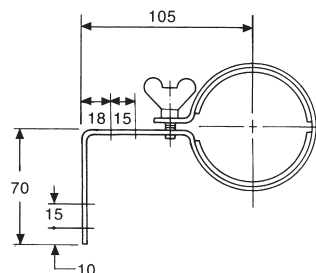
ORDER NO.	WEIGHT (kg)	CODE NO.
JF-110	0.6	1025-050
JF-111	0.6	1025-051
JF-112	0.6	1025-052
JF-115	0.1	1025-053



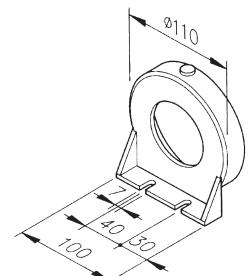
● JF-110 MOUNTING FIXTURE



● JF-111 MOUNTING FIXTURE



● JF-112 MOUNTING FIXTURE



● JF-115 MOUNTING STAND