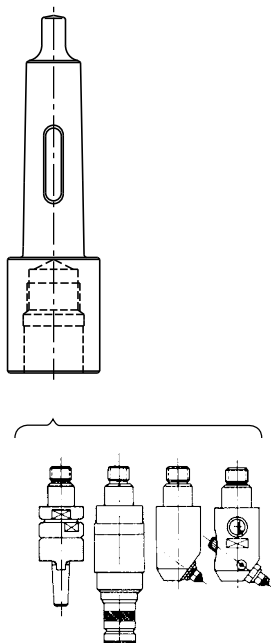
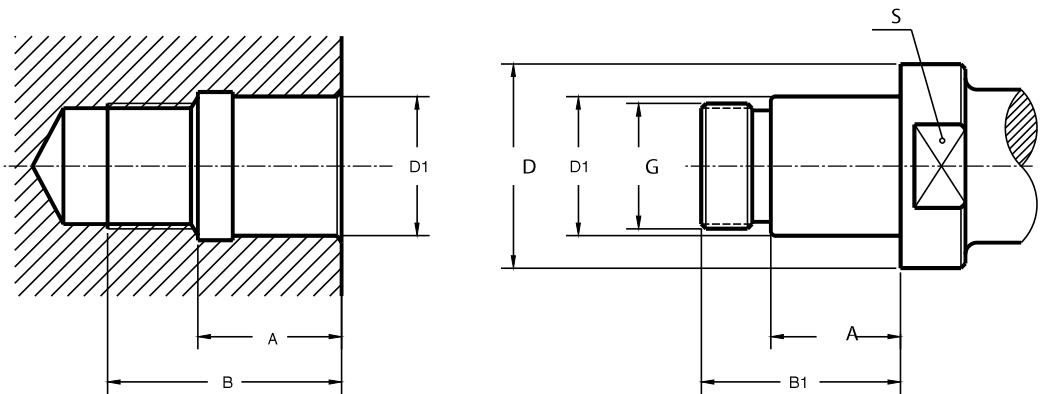


K	D1 h5	D	L	COD.	Availability Disponibilidad Verfügbarkeit
M4	30	46	66	003 02 54 05 06	■
M5	30	46	50	003 02 54 06 06	■
M5	46	63	90	003 02 54 06 07	■

Page: 205



Make sure before assembling the modular system to clean and grease properly every single piece.



D	D1	G	A	B	A1	B1	S
14,5	10,5	M.10 x 1,5	9	17	7,5	15,5	13
18,5	13	M.12 x 1,75	14	24	12,5	21	17
23	16	M.14 x 2	17	28	15	25	25
29	20	M.16 x 2	21	34	19	31	24
36	26	M.20 x 2,5	27	42	24	39	32
46	30	M.27 x 3	30	46	28	43	41
63	46	M.42 x 4,5	48	70	41	64	55
90	46	M.42 x 4,5	48	70	41	64	75

**Material**

Case-hardening alloy steel.  
 Case-hardened and tempered.  
 Minimum strength in core 880 N/mm<sup>2</sup>  
 Surface hardness HRC 57 ÷ 60

**Material**

Acero aleado de cementación.  
 Cementado y templado.  
 Resistencia mínima al núcleo 880 N/mm<sup>2</sup>  
 Dureza superficial HRC 57 ÷ 60

**Material**

Hochlegierter Stahl  
 Einsatzgehärtet  
 Zugfestigkeit im Kern: mind. 880 N/mm<sup>2</sup>  
 Oberflächenhärte: HRC 57-60