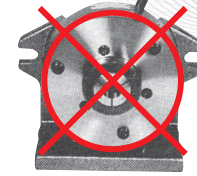
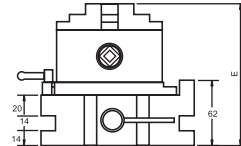
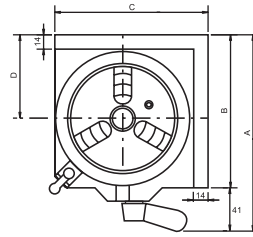
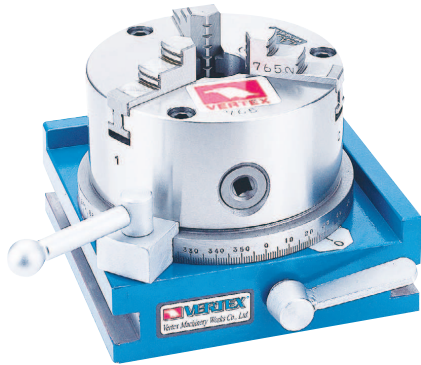


# Economical Type Rapid Index



5C COLLET INDEXER  
NON ECONOMICAL

- 3 JAW CHUCK VSC-4A, for VSI-4 / VSC-5A for VSI-5, the big range clamping capacity  $\varnothing 3 - \varnothing 100$ , it's better than collet fixing type.
- Simple & rapid operation.
- Dividual number 24-notch ( $15^\circ$  each)
- Table scale  $1^\circ$ , for angular indexing.
- Table bore 30mm.
- Horizontal / vertical & 2 direction
- Suit for milling & drilling machine using.
- Optional: tailstock TS-1, Please see page A2

ORDER NO.	A	B	C	D	E	kgs	CODE NO.
VSI-4	187	146	146	80	135	10.5	1001-064
VSI-5	202	161	161	87	142	14.5	1001-065