

MAS-BT - High Precis. Drill Chuck - BT40

https://www.kfh-hermann.de/shop/product_info.php?products_id=166&XTCsid=n7eemf1jolajl8itk84fees403

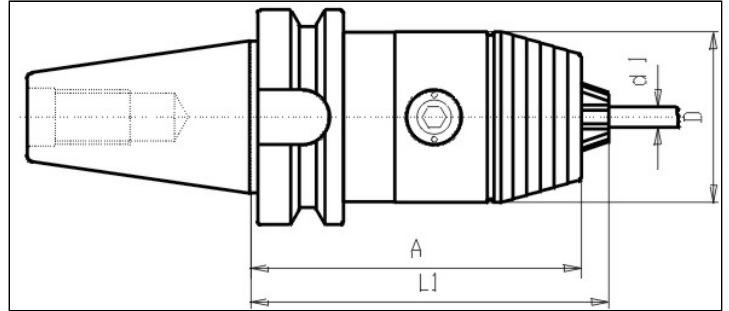


Illustration



(https://www.kfh-hermann.de/shop/shop/images/product_images/original_images/bilder_B434.jpg?XTCsid=n7eemf1jolajl8itk84fees403)

Drawing



(https://www.kfh-hermann.de/shop/shop/images/product_images/original_images/skizzen_Z434mb.jp?XTCsid=n7eemf1jolajl8itk84fees403)

Technical information

Usage:	For clamping of toolings with zylindrical shafts Permissible rotating speed: Clamping range 0,5 - 8 mm max. 25.000 U/min Clamping range 1 - 13 mm max. 20.000 U/min Clamping range 3 - 16 mm max. 15.000 U/min To fit these rotating speed
Scope of delivery:	with spanner
Accuracy:	Runout max. 20µm
Customs tariff code:	84 661 02 0

Variants

Product No.	BT	d1	A	l1	Form	D	weight in kg	Stock 12.02, 08:14	Net-price
G434 40x08	40	0,5-8	78	81	A	36	1,35	on inquiry	Please start an inquiry
G434 40x13	40	1-13	98	104	A	50	2	6	Please start an inquiry
G434 40x16	40	3-16	98	109	A	57	2,15	on inquiry	Please start an inquiry

Stock data from 2024-02-12 08:14:41

Kontakt

KARL HERMANN GmbH | Varnbülerstrasse 10 - 12 | D - 71229 Leonberg | | Tel.: +49 (0)7152 / 93992-0 | Fax: +49 (0)7152 / 93992-4 | E-Mail: verkauf@kfh-hermann.de | Internet: <http://www.kfh-hermann.de>

2024-02-13 11:21:41, https://www.kfh-hermann.de/shop/product_info.php?products_id=166&XTCsid=n7eemf1jolajl8itk84fees403