

MAS-BT - High Precis. Drill Chuck - BT40 Form ADB

https://www.kfh-hermann.de/shop/product_info.php?products_id=167&XTCsid=n7eemf1jolajl8itk84fees403

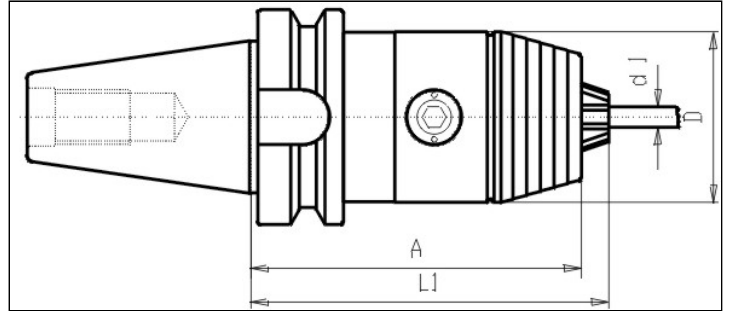


Illustration



(https://www.kfh-hermann.de/shop/shop/images/product_images/original_images/bilder_B434.jpg?XTCsid=n7eemf1jolajl8itk84fees403)

Drawing



(https://www.kfh-hermann.de/shop/shop/images/product_images/original_images/skizzen_Z434mb.jp?XTCsid=n7eemf1jolajl8itk84fees403)

Technical information

| | |
|-----------------------------|--|
| Usage: | For clamping of toolings with zylindrical shafts Permissible rotating speed: Clamping range 0,5 - 8 mm max. 25.000 U/min Clamping range 1 - 13 mm max. 20.000 U/min Clamping range 3 - 16 mm max. 15.000 U/min To fit these rotating speed |
| Scope of delivery: | with spanner |
| Accuracy: | Runout max. 20µm |
| Customs tariff code: | 84 661 02 0 |
| Coolant supply: | combined coolant version AD/B |

Variants

| Product No. | BT | d1 | A | l1 | Form | D | weight in kg | Stock 12.02, 08:14 | Net-price |
|-------------|----|-------|----|-----|------|----|--------------|-----------------------|--------------------------------|
| G434D 40x08 | 40 | 0,5-8 | 81 | 84 | AD/B | 36 | 1,35 | on inquiry | Please start an inquiry |
| G434D 40x13 | 40 | 1-13 | 98 | 104 | AD/B | 50 | 2 | 4 | Please start an inquiry |
| G434D 40x16 | 40 | 3-16 | 98 | 109 | AD/B | 57 | 2,15 | 1 | Please start an inquiry |

Stock data from 2024-02-12 08:14:41

Kontakt

KARL HERMANN GmbH | Varnbülerstrasse 10 - 12 | D - 71229 Leonberg || Tel.: +49 (0)7152 / 93992-0 | Fax: +49 (0)7152 / 93992-4 | E-Mail: verkauf@kfh-hermann.de | Internet: <http://www.kfh-hermann.de>

2024-02-13 11:21:55, https://www.kfh-hermann.de/shop/product_info.php?products_id=167&XTCsid=n7eemf1jolajl8itk84fees403