

# MAS-BT - High Precis. Drill Chuck - BT50

[https://www.kfh-hermann.de/shop/product\\_info.php?products\\_id=168&XTCsid=n7eemf1jolajl8itk84fees403](https://www.kfh-hermann.de/shop/product_info.php?products_id=168&XTCsid=n7eemf1jolajl8itk84fees403)

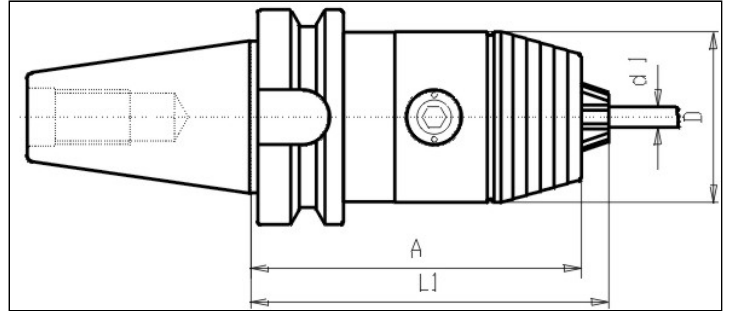


## Illustration



([https://www.kfh-hermann.de/shop/shop/images/product\\_images/original\\_images/bilder\\_B434.jpg?XTCsid=n7eemf1jolajl8itk84fees403](https://www.kfh-hermann.de/shop/shop/images/product_images/original_images/bilder_B434.jpg?XTCsid=n7eemf1jolajl8itk84fees403))

## Drawing



([https://www.kfh-hermann.de/shop/shop/images/product\\_images/original\\_images/skizzen\\_Z434mb.jp?XTCsid=n7eemf1jolajl8itk84fees403](https://www.kfh-hermann.de/shop/shop/images/product_images/original_images/skizzen_Z434mb.jp?XTCsid=n7eemf1jolajl8itk84fees403))

## Technical information

<b>Usage:</b>	For clamping of toolings with zylindrical shafts Permissible rotating speed: Clamping range 0,5 - 8 mm max. 25.000 U/min Clamping range 1 - 13 mm max. 20.000 U/min Clamping range 3 - 16 mm max. 15.000 U/min To fit these rotating speed
<b>Scope of delivery:</b>	with spanner
<b>Accuracy:</b>	Runout max. 20µm
<b>Customs tarif code:</b>	84 661 02 0

## Variants

Product No.	BT	d1	A	l1	Form	D	weight in kg	Stock 12.02, 08:14	Net-price
G434 50x13	50	1-13	110	116	A	50	4,6	7	<b>Please start an inquiry</b>
G434 50x16	50	3-16	110	121	A	57	4,9	3	<b>Please start an inquiry</b>

Stock data from 2024-02-12 08:14:41

## Kontakt

KARL HERMANN GmbH | Varnbülerstrasse 10 - 12 | D - 71229 Leonberg || Tel.: +49 (0)7152 / 93992-0 | Fax: +49 (0)7152 / 93992-4 | E-Mail: [verkauf@kfh-hermann.de](mailto:verkauf@kfh-hermann.de) | Internet: <http://www.kfh-hermann.de>

2024-02-13 11:22:12, [https://www.kfh-hermann.de/shop/product\\_info.php?products\\_id=168&XTCsid=n7eemf1jolajl8itk84fees403](https://www.kfh-hermann.de/shop/product_info.php?products_id=168&XTCsid=n7eemf1jolajl8itk84fees403)