

MAS-BT - High Precis. Drill Chuck - BT50 Form ADB

https://www.kfh-hermann.de/shop/product_info.php?products_id=169&XTCsid=n7eemf1jolajl8itk84fees403

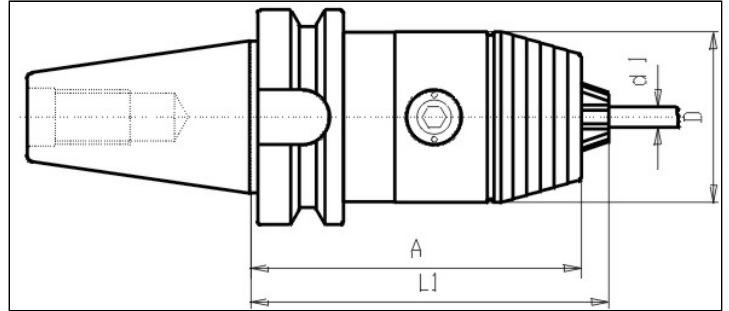


Illustration



(https://www.kfh-hermann.de/shop/shop/images/product_images/original_images/bilder_B434.jpg?XTCsid=n7eemf1jolajl8itk84fees403)

Drawing



(https://www.kfh-hermann.de/shop/shop/images/product_images/original_images/skizzen_Z434mb.jp?XTCsid=n7eemf1jolajl8itk84fees403)

Technical information

Usage:	For clamping of toolings with zylindrical shafts Permissible rotating speed: Clamping range 0,5 - 8 mm max. 25.000 U/min Clamping range 1 - 13 mm max. 20.000 U/min Clamping range 3 - 16 mm max. 15.000 U/min To fit these rotating speed
Scope of delivery:	with spanner
Accuracy:	Runout max. 20µm
Customs tarif code:	84 661 02 0
Coolant supply:	combined coolant version AD/B

Variants

Product No.	BT	d1	A	l1	Form	D	weight in kg	Stock 12.02, 08:14	Net-price
G434D 50x13	50	1-13	110	116	AD/B	50	4,6	on inquiry	Please start an inquiry
G434D 50x16	50	3-16	110	121	AD/B	57	4,9	2	Please start an inquiry

Stock data from 2024-02-12 08:14:41

Kontakt

KARL HERMANN GmbH | Varnbülerstrasse 10 - 12 | D - 71229 Leonberg | | Tel.: +49 (0)7152 / 93992-0 | Fax: +49 (0)7152 / 93992-4 | E-Mail: verkauf@kfh-hermann.de | Internet: <http://www.kfh-hermann.de>

2024-02-13 11:22:27, https://www.kfh-hermann.de/shop/product_info.php?products_id=169&XTCsid=n7eemf1jolajl8itk84fees403