

# DIN 69871 - High Precis. Drill Chuck - SK40 Form AD/B



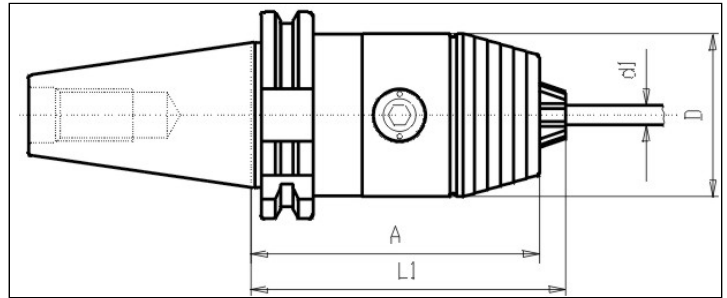
[https://www.kfh-hermann.de/shop/product\\_info.php?products\\_id=100&XTCsid=n7eemf1jolajl8itk84fees403](https://www.kfh-hermann.de/shop/product_info.php?products_id=100&XTCsid=n7eemf1jolajl8itk84fees403)

## Illustration



([https://www.kfh-hermann.de/shop/shop/images/product\\_images/original\\_images/bilder\\_B334.jpg?XTCsid=n7eemf1jolajl8itk84fees403](https://www.kfh-hermann.de/shop/shop/images/product_images/original_images/bilder_B334.jpg?XTCsid=n7eemf1jolajl8itk84fees403))

## Drawing



([https://www.kfh-hermann.de/shop/shop/images/product\\_images/original\\_images/skizzen\\_Z334mb.jp?XTCsid=n7eemf1jolajl8itk84fees403](https://www.kfh-hermann.de/shop/shop/images/product_images/original_images/skizzen_Z334mb.jp?XTCsid=n7eemf1jolajl8itk84fees403))

## Technical information

<b>Usage:</b>	For clamping of toolings with cylindrical shafts
<b>Scope of delivery:</b>	with spanner
<b>Accuracy:</b>	Runout max. 20µm
<b>Customs tariff code:</b>	84 661 02 0
<b>Coolant supply:</b>	combined coolant version AD/B

## Variants

Product No.	SK	d1	A	l1	Form	D	weight in kg	Stock 12.02, 08:14	Net-price
G334D 40x08	40	0,5-8	76	79	AD/B	36	1,15	on inquiry	<b>Please start an inquiry</b>
G334D 40x13	40	1-13	95	101	AD/B	50	1,75	5	<b>Please start an inquiry</b>
G334D 40x16	40	3-16	100	106	AD/B	57	1,95	3	<b>Please start an inquiry</b>

Stock data from 2024-02-12 08:14:41

## Kontakt

KARL HERMANN GmbH | Varnbülerstrasse 10 - 12 | D - 71229 Leonberg || Tel.: +49 (0)7152 / 93992-0 | Fax: +49 (0)7152 / 93992-4 | E-Mail: [verkauf@kfh-hermann.de](mailto:verkauf@kfh-hermann.de) | Internet: <http://www.kfh-hermann.de>

2024-02-13 10:50:37, [https://www.kfh-hermann.de/shop/product\\_info.php?products\\_id=100&XTCsid=n7eemf1jolajl8itk84fees403](https://www.kfh-hermann.de/shop/product_info.php?products_id=100&XTCsid=n7eemf1jolajl8itk84fees403)